

UCLA Extension 2017 Summer On-Campus Housing Information

- [General Housing Information](#)
- [Life in the Residence Halls](#)
- [Tips to Choosing Housing](#)
- [Resident Assistant \(RA\) and Resident Director \(RD\)](#)
- [Summer Pricing](#)
- [Transportation](#)
- [How to Apply](#)
- [Other Helpful Resources](#)
- [Housing Confirmation & Check-In](#)
- [FAQs](#)
- [Meal Plans](#)
- [Front Desk](#)

General Housing Information

- Housing information is available on the UCLA Housing website (<https://housing.ucla.edu/>).
- **Housing availability is on a first-come, first-served basis.** Since UCLA housing fills up quickly, we recommend that you apply as early as possible to be guaranteed a room.
- Requests for a specific roommate require *you and your desired roommate* to **request each other** when applying for housing online.

How to Apply for On-Campus Housing

- All students will need to **obtain a UCLA ID** number from the American Language Center (*this is different from your UCLA Extension ID number*). Our office will provide you with a UCLA Student ID number by email approximately **2 weeks after you have enrolled** in a *full-time* summer intensive English program.
- Once you have obtained your UCLA ID number, please [setup your UCLA Student Login](#).
- Log into the [UCLA Summer Housing website](#) to reserve and pay for housing.

Housing Confirmation & Check-In

- After paying for your on-campus housing, you can log in to view your housing confirmation on the housing website.
- You will receive your room assignment by email about **2 weeks before you check in**.
- The recommended **check-in time is between 3pm and 8pm** on the Sunday at the start of your housing contract.
- On check-in day there is a short orientation as well as a campus tour given at various times in the afternoon.

Tips to Choosing Housing

1. Determine which program you are enrolling into:
 - [Academic Intensive English Program \(AIEP\)](#)
 - [Intensive English Communication Program \(IECP\)](#)
2. Determine which program offering(s) you are enrolling into:

	Session	Start	End
AIEP	A	June 26	September 15
	B	June 26	August 4
	C	August 7	September 15
IECP	11	July 3	September 15
	A	July 3	July 27
	B	July 31	August 24
	C	August 28	September 15

3. Review all the summer on-campus [housing facilities](#), [prices](#) and [meal plan](#) options available. Consider your budget as you go through each of the following steps.
4. Select an on-campus [housing facility](#):
 - Classic Residence Hall - *Hedrick Hall (HED)*
 - Residential Suite - *Hitch Suites (HT)*
5. Select a room option:
 - Double – a shared room with two beds.
 - Triple – a shared room with three beds (one bunk bed and one single bed)
6. Select a [meal plan](#):
 - 21 Meals per week
 - 15 Meals per week
 - 11 Meals per week

Meal Plans

- For added convenience, the UCLA Housing Office offers several meal plan options. Meal plans are selected at the time you accept your housing offer and make your initial contract payment. Meal plans are mandatory for on-campus housing.
- Meal plans start on Monday and end on Sunday. Meals do not roll over. **Any meal credits not used by the end of the week will be lost.** Please note that only dinner will be available on the Sunday of check-in.
- Summer meal plans provide options:
 - 21 Meals per week
 - 15 Meals per week
 - 11 Meals per week
- During [breakfast hours](#), you can prepare a sack lunch of pre-packaged food items at [Café 1919](#). *One sack lunch = one meal.*
- You may choose to upgrade from a lower meal plan to a higher meal plan after your contract is active. To upgrade you will need to pay the difference in cost, plus a \$25 processing fee. *You will not be able to downgrade from a higher meal plan to a lower meal plan.*
- Check out our video preview of [UCLA dining services](#). Please note that summer meal plans are limited to specified on-campus dining locations. Summer dining will begin at [FEAST at Rieber and Rendezvous](#). Please note that dining locations may be subject to change without notice.
- Vegetarian, vegan, [kosher and halal](#) options are always available in dining halls. For other dietary concerns, please contact Dolores Hernandez, Nutrition Education Coordinator, at dhernandez3@ha.ucla.edu.

Front Desk

- The Front desk is located in the lobby area of the Hedrick Hall. There is staff available to assist you 24 hours a day, 7 days a week.
- The front desk staff can provide the following free services:
 - Maintenance/Repairs for your room
 - Extra blankets
 - Access to private study and music rooms
 - Access to the TV lounge
 - Equipment for the game room

- Directions and information about local areas

Resident Assistant and Resident Director

- Each floor has a Resident Assistant (RA) available to answer questions and assist you with on-campus living situations, including roommate conflicts (communication issues, noises, or guests staying overnight without permission).
- Resident Directors (RD) supervise the RAs and can also help resolve problems and handle conduct issues.
- **You cannot change or switch rooms without the approval of your RA or RD.**

Life in the Residence Halls

- Take a [video tour](#) of UCLA's residence hall buildings.
- Check out this video preview of [life on the hill](#).
- Review our [residence rules](#).
- **UCLA is smoke-free and tobacco-free:** The use of cigarettes, cigars, chewing tobacco and all other tobacco products, *as well as electronic cigarettes*, is prohibited on UCLA's campus, including UCLA housing. No smoking is allowed inside or outside UCLA and UCLA Extension buildings.
- Wi-Fi services are available at all UCLA facilities and may require a UCLA Student Login. Please watch [UCLA's file sharing video](#) before utilizing these Wi-Fi services.

Transportation to UCLA Extension Lindbrook Center

- Bus: Take Metro black bus line #734 from Sunset and Bellagio, or Metro white bus line #2/302 from Gayley and Landfair (about 20 minutes).
- Bike: Ride down De Neve and Gayley until you reach Lindbrook (about 6 minutes). There are over 2,900 free bike parking spaces in racks all over campus.
- Walking: Walk down De Neve and Galeley until you reach Lindbrook (about 30 minutes).
- Rideshare Service: This will cost about \$4-\$8 one way (about 8-10 minutes, plus wait time).

Transportation to around Westwood Village and Los Angeles

- Bruin Bus: Take the free Bruin Bus to libraries and points of interest at UCLA and into Westwood Village. Review the [route map](#) for hours and stops.
- City buses and Metro Rail: Purchase a pass to Metro, Culver City and/or Santa Monica bus lines. [Click here](#) for more details about city bus fares.
- Rideshare Service: [Lyft](#) and [Uber](#) provide affordable rideshare services for short trips.

Other Helpful Resources

- Try the [UCLA Housing Tour](#) to explore Hedrick Hall and Hitch Suites or take the [YouVisit virtual walking tour](#) of UCLA's on-campus housing area.

- Visit the [UCLA Tips](#) student-run blog for an extensive overview of campus housing benefits and visit the [UCLA On The Hill](#) blog for tips on living on-campus.
- Watch this [student's easy breakdown](#) of on-campus housing options. *Before viewing the video, please note the limited [summer housing options](#).*
- Wondering what to bring? Check out this helpful list of what to pack and what to buy, and review the [residential regulations](#) for what to leave behind.
- Review this list of suggested [items to bring or purchase](#) for school and living in residence halls.
- Find dining hall menus, events on and off campus, Bruin Bus schedules and more with the [UCLA mobile app](#).

UCLA Summer Housing Comparison

	UCLA HEDRICK RESIDENCE HALL	UCLA HITCH RESIDENCE SUITES
Distance to classrooms	1.93 km	2.09 km
24-Hour Front Desk Service	Yes	At Hedrick Hall
Accessible Microwave	Yes	Yes
Air Conditioning	No	No
ATM Machines	Lobby Area	At Hedrick Hall
Community Bathrooms	Yes	Shared Bathroom
Community Kitchen	No	Yes
Computer Labs	No	No
Computer Network Connection/ Internet	(Ethernet Cable or wireless access card required)	(Ethernet Cable or wireless access card required)
Elevators	Yes	No
Fitness Room	Yes	At Hedrick Hall
Gym Equipment	Yes	Outdoor Only
Key Card for Entry Access	Yes	Yes
Laundry Rooms	Laundromat (Guest BruinCard required)	Laundromat (Guest BruinCard required)
Living Room	No	Yes
Meal Plan (Residential Restaurant or Café)	Yes	Yes
Monitored Evening Access	Yes	No
Multipurpose / Study Lounge	Yes	Yes
Music Rooms	Yes	At Hedrick Hall
Non-Smoking	Yes	Yes
Private Entry	-	Yes
Recreation / Game Rooms	Yes	At Hedrick Hall
Study Rooms	Yes	At Hitch Commons
Vending Machines	Yes	Yes
Other	-	Basketball Courts*
More information	Hedrick Hall Student Video Tour Study and Dining Room Photos	Hitch Suites Student Video Tour Arch Daily article

*Equipment not included.

Summer On-Campus Housing Buildings

Click here for more information about [Hedrick Hall](#) and [Hitch Suites](#).

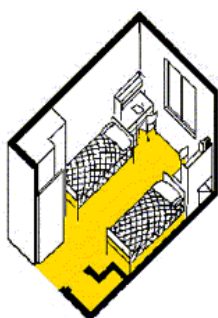
UCLA Summer Residence Halls

Is the residence hall a co-ed buildings?

Yes. Students in the residence halls live on co-ed floors with separate male and female restrooms that include private shower facilities.

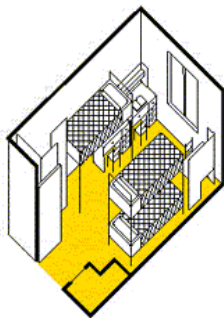
What is in each room?

Residence hall rooms are carpeted, and each student has a desk, chair, bookcase, and closet space with drawers. Each student will have a twin bed with 1 pillow, 1 pillow case, 1 top sheet, 2 blankets, and 1 towel.



Double Occupancy

*Two (2) students
per unit in total*



Triple Occupancy

*Three (3) students
per unit in total*

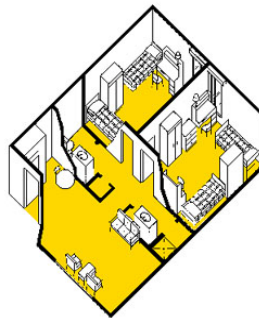
UCLA Summer Residence Suites

Can I choose the building where I will stay?

No. Your building assignment will be determined by UCLA Housing.

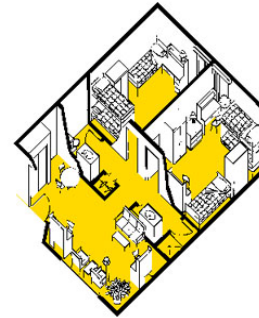
What is included in the residence suite?

Rooms and suites are carpeted, and each student has use of a twin bed, desk, chair, bookcase, and drawer space. Suite bedrooms are shared by either two or three students. All suites have chairs, coffee tables, and a sofa in the living room. Each student will have a twin bed with 1 pillow, 1 pillow case, 1 top sheet, 2 blankets, and 1 towel.



Double Occupancy

*Four (4) students
per unit in total*



Triple Occupancy

*Six (6) students per
unit in total*

On-Campus Summer Meal Plan Dining Locations

All on-campus housing contracts include a meal plan. Students may use their meal cards at these UCLA cafeteria style dining locations. Simply hand your card to the cashier as you enter. The cashier will swipe your card and meals will be deducted from your meal plan. Visit the [UCLA Dining Services](#) webpage for details on daily menus, service hours, nutrition details and assistance for dietary restrictions. Please note that dining locations may be subject to change without notice.



Located in Rieber Hall, FEAST's self-service stations feature rotating menus.



Located in Rieber Court, Rendezvous features rotating menus with dine-in and to-go options.



Located in Delta Terrace, Café 1919 is the spots for to-go sack lunches with pre-packaged food items.



On-Campus Summer Pricing

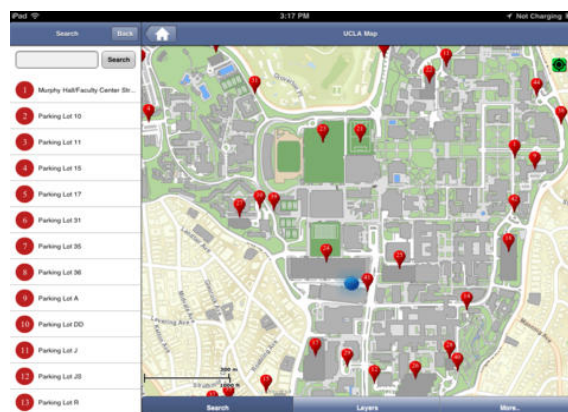
Intensive English Communication Program (IECP) Sessions

AIEP Summer 2017 Session A <i>Housing Session 12</i> June 25 – September 15			
	Room Type	Meal Plan	Contract Total
CLASSIC RESIDENTIAL HALL HEDRICK HALL (HED)	Double	21 Meals	\$ 5,840.04
	Double	15 Meals	\$ 5,204.54
	Double	11 Meals	\$ 4,835.54
	Triple	21 Meals	\$ 4,692.04
	Triple	15 Meals	\$ 4,056.54
	Triple	11 Meals	\$ 3,687.54
RESIDENTIAL SUITE HITCH SUITES (HT)	Double	21 Meals	\$ 6,988.04
	Double	15 Meals	\$ 6,352.54
	Double	11 Meals	\$ 5,983.54
	Triple	21 Meals	\$ 5,840.04
	Triple	15 Meals	\$ 5,204.54
	Triple	11 Meals	\$ 4,835.54

AIEP Summer 2017 Session B <i>Housing Session A6</i> June 25 – August 4			
	Room Type	Meal Plan	Contract Total
CLASSIC RESIDENTIAL HALL HEDRICK HALL (HED)	Double	21 Meals	\$ 2,873.20
	Double	15 Meals	\$ 2,563.20
	Double	11 Meals	\$ 2,383.20
	Triple	21 Meals	\$ 2,313.20
	Triple	15 Meals	\$ 2,003.20
	Triple	11 Meals	\$ 1,823.20
RESIDENTIAL SUITE HITCH SUITES (HT)	Double	21 Meals	\$ 3,433.20
	Double	15 Meals	\$ 3,123.20
	Double	11 Meals	\$ 2,943.20
	Triple	21 Meals	\$ 2,873.20
	Triple	15 Meals	\$ 2,563.20
	Triple	11 Meals	\$ 2,383.20

AIEP Summer 2017 Session C <i>Housing Session C6</i> August 6 – September 15			
	Room Type	Meal Plan	Contract Total
CLASSIC RESIDENTIAL HALL HEDRICK HALL (HED)	Double	21 Meals	\$ 2,873.20
	Double	15 Meals	\$ 2,563.20
	Double	11 Meals	\$ 2,383.20
	Triple	21 Meals	\$ 2,313.20
	Triple	15 Meals	\$ 2,003.20
	Triple	11 Meals	\$ 1,823.20
RESIDENTIAL SUITE HITCH SUITES (HT)	Double	21 Meals	\$ 3,433.20
	Double	15 Meals	\$ 3,123.20
	Double	11 Meals	\$ 2,943.20
	Triple	21 Meals	\$ 2,873.20
	Triple	15 Meals	\$ 2,563.20
	Triple	11 Meals	\$ 2,383.20

Use the UCLA Map app to find your way around campus. Find it on [iTunes](#) or [Google Play!](#)



On-Campus Summer Pricing

Academic Intensive English Program (AIEP) Sessions

IECP Summer 2017 11 Week Session Housing Session 11J July 2 - September 15			
	Room Type	Meal Plan	Contract Total
CLASSIC RESIDENTIAL HALL HEDRICK HALL (HED)	Double	21 Meals	\$ 5,871.00
	Double	15 Meals	\$ 5,289.75
	Double	11 Meals	\$ 4,952.25
	Triple	21 Meals	\$ 4,839.75
	Triple	15 Meals	\$ 4,258.50
	Triple	11 Meals	\$ 3,921.00
RESIDENTIAL SUITE HITCH SUITES (HT)	Double	21 Meals	\$ 7,333.50
	Double	15 Meals	\$ 6,752.25
	Double	11 Meals	\$ 6,414.75
	Triple	21 Meals	\$ 5,871.00
	Triple	15 Meals	\$ 5,289.75
	Triple	11 Meals	\$ 4,952.25






IECP Summer 2017 Session A Housing Session 4J July 2 – July 28			
	Room Type	Meal Plan	Contract Total
CLASSIC RESIDENTIAL HALL HEDRICK HALL (HED)	Double	21 Meals	\$ 2,065.96
	Double	15 Meals	\$ 1,864.46
	Double	11 Meals	\$ 1,747.46
	Triple	21 Meals	\$ 1,708.46
	Triple	15 Meals	\$ 1,506.96
	Triple	11 Meals	\$ 1,389.96
RESIDENTIAL SUITE HITCH SUITES (HT)	Double	21 Meals	\$ 2,572.96
	Double	15 Meals	\$ 2,371.46
	Double	11 Meals	\$ 2,254.46
	Triple	21 Meals	\$ 2,065.96
	Triple	15 Meals	\$ 1,864.46
	Triple	11 Meals	\$ 1,747.46

IECP Summer 2017 Session B Housing Session 4A July 30 – August 25			
	Room Type	Meal Plan	Contract Total
CLASSIC RESIDENTIAL HALL HEDRICK HALL (HED)	Double	21 Meals	\$ 2,065.96
	Double	15 Meals	\$ 1,864.46
	Double	11 Meals	\$ 1,747.46
	Triple	21 Meals	\$ 1,708.46
	Triple	15 Meals	\$ 1,506.96
	Triple	11 Meals	\$ 1,389.96
RESIDENTIAL SUITE HITCH SUITES (HT)	Double	21 Meals	\$ 2,572.96
	Double	15 Meals	\$ 2,371.46
	Double	11 Meals	\$ 2,254.46
	Triple	21 Meals	\$ 2,065.96
	Triple	15 Meals	\$ 1,864.46
	Triple	11 Meals	\$ 1,747.46

IECP Summer 2017 Session C Housing Session 3S August 27 – September 15			
	Room Type	Meal Plan	Contract Total
CLASSIC RESIDENTIAL HALL HEDRICK HALL (HED)	Double	21 Meals	\$ 1,522.28
	Double	15 Meals	\$ 1,375.03
	Double	11 Meals	\$ 1,289.53
	Triple	21 Meals	\$ 1,261.03
	Triple	15 Meals	\$ 1,113.78
	Triple	11 Meals	\$ 1,028.28
RESIDENTIAL SUITE HITCH SUITES (HT)	Double	21 Meals	\$ 1,892.78
	Double	15 Meals	\$ 1,745.53
	Double	11 Meals	\$ 1,660.03
	Triple	21 Meals	\$ 1,522.28
	Triple	15 Meals	\$ 1,375.03
	Triple	11 Meals	\$ 1,289.53

***Please note that not all rooms will look exactly the same as those provided in the sample tours and photos. Meal plan options will be restricted to specifically assigned residential restaurant locations.**

Bus Information

Company Name	Cost per Ride	Areas Served	30 Day Pass
<p style="text-align: center;">Bruin Bus</p>  <p style="text-align: center;">bruinbus.ucla.edu</p>	Free	UCLA Main Campus, limited parts of Westwood Village. See Map	n/a
<p style="text-align: center;">Big Blue Bus (Santa Monica Bus)</p>  <p style="text-align: center;">bigbluebus.com</p>	\$1.25 BBB Only \$2.50 Express Line	Westwood, Santa Monica, West LA, Downtown LA, and other nearby areas. See Map	\$50 BBB Only \$89 BBB + Express
<p style="text-align: center;">Culver City Bus</p>  <p style="text-align: center;">culvercity.org</p>	\$1.00	Culver City, Westwood and other nearby areas. See Map	n/a
<p style="text-align: center;">Metro Bus</p>  <p style="text-align: center;">& Metro Rail</p>  <p style="text-align: center;">metro.net</p>	\$1.75	Los Angeles County See Map	\$100 Regular \$43 Student

Single ride payments must be made in cash with exact change or use a pre-loaded Transit Access Pass (TAP) card. Check out these videos showing how to [purchase](#) and [reload](#) TAP cards at area kiosk. TAP cards may also be purchased at the Ralph's grocery store in Westwood Village. Students attending a 12-week program may request a discounted monthly Transit Access Pass (TAP) card from Metro. [Click here](#) to apply online for a College/Vocational TAP card.

Frequently Asked Questions and Answers

How do I apply for UCLA Housing?

Applications are done online. Please contact the ALC enrollment services team for more information on how to apply.

Can I get a room by myself?

No. Due to the high demand for housing, single occupancy rooms are not available for UCLA Housing.

Do I need to find my own roommates?

No, the housing office will assign roommates. However, you have the option to choose your roommate if you both request to live with each other when applying online.

Can I get a roommate of a different nationality?

Roommates are randomly assigned to you. We cannot guarantee the nationality of your roommate.

What are my meal plan options?

You have the option of 11, 15, or 21 meals per week based on the housing contract that you select. Your weekly meals start on Monday and end Sunday. Any unused meals within the week will be lost. Please note that you may eat dinner on the Sunday of check-in.

Can I choose not to have a meal plan?

No, all UCLA housing contracts include a mandatory meal plan.

Can I prepare my own meals in my room?

Cooking is not allowed in rooms. However, students staying in Hitch Suite may use the community kitchen in Hitch Commons.

Is there a phone in the room?

Yes. Telephones are provided in each room and include free campus calls. To make local, long distance, or international calls you will need to purchase a toll-free calling card. We recommend that you bring your own cell phone or purchase a pre-paid cell phone when you arrive.

Is internet access included?

Each housing unit has access to high-speed internet using Wi-Fi or Ethernet connections. The cost is included in your housing contract. You will need to bring your own Ethernet cable to have Ethernet access. Please watch [UCLA's file sharing video](#) before utilizing this service.

What activities are available?

Special events and activities are planned for campus residents throughout the summer. The residence hall has computer labs, study lounges and study rooms, an exercise room, a music room, and a TV lounge for residents.

Virtual tours and video for UCLA Housing:

- [Visit UCLA](#)
- [Residential Suites overview](#)
- [UCLA Housing Map](#)

UCLA Summer Study Recommended Supply List

Residence hall students will be provided standard bed linens (1 pillow, 1 pillow case, 1 top sheet, 2 blankets) and 1 towel during check-in.

School Supplies	
1-2 Flash drives	Ink pens
Backpack / messenger bag	Highlighters
Notebooks with pre-perforated sheets	Compact stapler and standard staples
Binders/folders	Scissors
Pencil case	Day-planner
Binder dividers	Passport and I-20
Refillable mechanical pencils and refills	Bank card / credit card

Dorm Room	
Insulated hot/cold beverage tumbler	Reusable fork/knife/spoon set
Extra-large microwave safe coffee mug	Cell phone and charger
Re-sealable snack bags	Sewing kit and safety pins
1- 3 Microwave safe food containers	Flashlight for emergencies

Bathroom	
Personal hygiene supplies	Hanging shower caddy
Toothbrush and toothpaste	Facial tissues
Oral hygiene products	Shower shoes (waterproof sandals)
Hair products	Laundry supplies
Shaving supplies	Compact laundry basket
Sunscreen	Hair dryer
Refillable, squeezable, travel-size bottles	Basic healthcare supplies / medications
Compact first aid kit	Bathrobe

Wardrobe	
T-shirts / casual tops	(Slim) clothes hangers
Casual pants	Bathing suit
Shorts / casual skirts / dresses	Walking shoes
Work-out attire	Flip-flops or sandals
Pajamas	Light jacket / hoodie / sweater

*All of these items are **recommended**.
UCLA and UCLA Extension will not be held liable if any of these items are lost, damaged, or stolen.*